

Old Time Fiddle Tunes For Fiddle and Mandolin, Volume 1
by Peter Martin

Please Read First

This book is distributed using the shareware system. Try it out, if you like it please send me \$10.00. Go to www.petimarpress.com for payment info, or send to

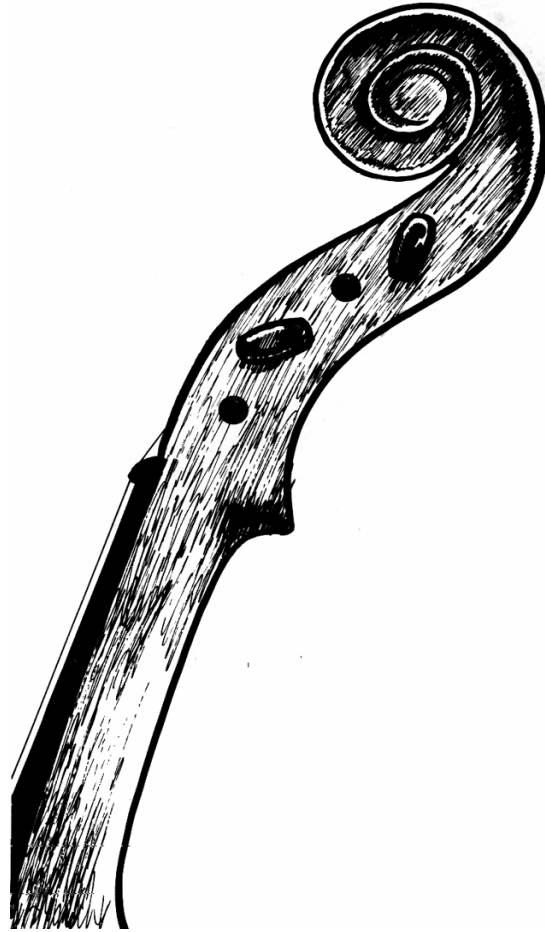
Pete Martin
PO Box 33482
Seattle, WA 98133
206-367-9756
www.petimarpress.com
email: pete@petimarpress.com

If you prefer PayPal, email me and I'll bill you that way.

Feel free to copy and distribute to others. See my web site for other instruction materials for fiddle and mandolin.

Copyright© 1995 by Peter Martin

Old Time Fiddle Tunes



For

Fiddle and Mandolin

In Music Notation and Mandolin Tablature

Volume 1

By Peter Martin

Old Time Fiddle Tunes

For

Fiddle and Mandolin

Volume 1

Copyright© 1995 by Peter Martin

No part of this publication and/or recording can be duplicated or used in any other way without written permission of the author.

TABLE OF CONTENTS

Introduction.....	5
Amazing Grace.....	7
Arkansas Traveler.....	8
Ash Grove.....	9
Bill Cheatum.....	10
Billy in the Lowground.....	11
Blackberry Blossom.....	12
Boil Them Cabbage Down.....	13
Cherokee Shuffle.....	14
Cold Frosty Morning.....	15
Colored Aristocracy.....	53
Cripple Creek.....	16
Devils Dream.....	17
Eighth of January.....	18
Fire on the Mountain.....	19
Fishers Hornpipe.....	20
Flop Eared Mule.....	21
Forked Deer.....	22
Girl I Left Behind Me.....	23
Golden Slippers.....	24
Growling Old Man and Grumbling Old Woman.....	25
High Level Hornpipe.....	57
Irish Washer Woman.....	58
June Apple.....	26
Liberty.....	27
Mason's Apron.....	28
Mississippi Sawyer.....	48
Muddy Roads.....	29
Old Joe Clark.....	30
Over The Waterfall.....	31
Piper's Creek.....	50
Rachel.....	56
Red Apple Rag.....	32
Red Haired Boy.....	33
Rites of Man.....	34
Sailor's Hornpipe.....	35
Saint Anne's Reel.....	36
Salt Creek.....	37
Saratoga Hornpipe.....	38
Sibaeg Simor.....	39
Smiths Reel.....	40
Soldiers Joy.....	41
Stones Rag.....	42

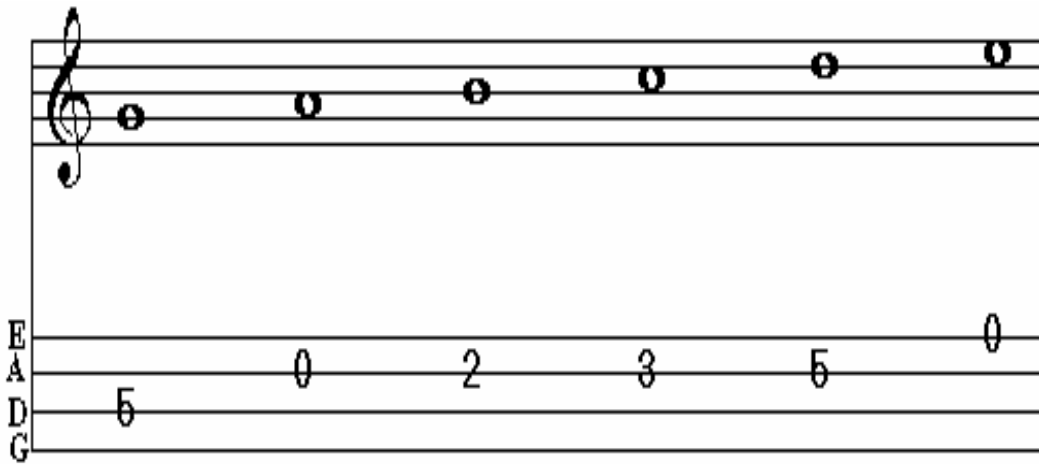
Stony Point.....	43
Swallow Tail Jig.....	44
Texas Gales.....	51
Tune from My Seventh Album.....	55
Turkey in the Straw.....	45
Whiskey Before Breakfast.....	46
Wind That Shakes The Barley.....	47
Woodchopper's Reel.....	49

Introduction

This book is a collection of common old time fiddle tunes. These are tunes you will hear played at many Bluegrass and Old Time music jams. The tunes collected here in Volume 1 are designed for beginning and intermediate level players. Volume 2 of this series are more advanced versions.

The tunes are written in standard music notation and mandolin tablature. Each instrument plays the same notes. This way, both instruments can learn the same version of the tune and play them easily together.

The standard music notation is on the top staff and the mandolin tablature is on the bottom staff.



The mandolin tablature (sometimes abbreviated *tab*) represents the four string pairs on the mandolin. When you see a number, it means play that string at that fret. Thus, in the tablature above, the first note is 5 on the D string. That means play the fifth fret on the D string. If you have any trouble reading standard music notation or mandolin tablature, I suggest purchasing one of the good instruction books on the market.

Some tunes are very easy, some more difficult. When learning each tune, play through the music slowly, and fiddlers, closely watch the bow directions!

I would appreciate any comments you may have on this book. Drop me a line at the address on the next page.

Thank you and good music to all.

About the Author

Pete Martin is a musician living in Seattle, Washington. He has taught fiddle, mandolin, guitar and tenor guitar professionally since 1980. Pete plays Bluegrass, Texas style old-time fiddle and Jazz.

Pete has performed and recorded with many Northwest artists. With the Skyline Drifters he appeared on the Nashville Network Bluegrass show “Fire on the Mountain”.

Pete has won or placed near the top in many regional and national instrumental competitions. In 1983, Pete placed in the top 5 at the Walnut Valley Mandolin Contest, Winfield, Kansas. In 1994, Pete was Adult Division National Fiddle Champion, held each year at Weiser Idaho.

Collecting and transcribing tunes and solos has been a hobby of his for years. At the suggestion of students and friends, Pete founded Petimar Press in 1994 to publish some of his collections. A list of available publications is at www.petimarpres.com, or contact Pete:

Pete Martin
PO Box 33482
Seattle, WA 98133
206-367-9756
email: pete@petimarpres.com

Amazing Grace

Traditional

Fiddle

Mandolin Tablature

D

V

G

D

2 0 4 4 2 0 4 2 2

This system contains the first two measures of the piece. The top staff is a fiddle line in treble clef with a key signature of two sharps (F# and C#) and a 3/4 time signature. The bottom staff is a mandolin tablature line with fret numbers 2, 0, 4, 4, 2, 0, 4, 2, and 2. Chord diagrams for D, V, G, and D are shown above the staff. A 'Traditional' label is centered above the system.

A

0 4 4 0 0 4

This system contains measures 3 and 4. The top staff shows a melodic line with a slur over the last two notes. The bottom staff shows fret numbers 0, 4, 4, 0, 0, and 4. A chord diagram for A is shown above the staff.

D

G

D

0 4 0 2 4 0 2 2

This system contains measures 5 and 6. The top staff shows a melodic line. The bottom staff shows fret numbers 0, 4, 0, 2, 4, 0, 2, and 2. Chord diagrams for D, G, and D are shown above the staff.

A

D

0 4 4 2 0 0

This system contains measures 7 and 8. The top staff shows a melodic line with a slur over the last two notes. The bottom staff shows fret numbers 0, 4, 4, 2, 0, and 0. Chord diagrams for A and D are shown above the staff.

Arrangement ©1995 by Pete Martin
All Rights Reserved

www.petimarpress.com

Arkansas Traveler

Traditional

Fiddle

D G A D A

Mandolin Tablature

2 4 | 0 2 4 0 | 4 4 4 | 2 2 2 0 0 0 | 2 2 2 4 4 4 | 2 4 2 0 4 2

D G A D A D

0 2 4 0 | 4 4 4 | 2 2 2 0 0 2 | 5 4 5 0 2 5 0 5 | 4 0 2 4 0

D G D A D A D A

2 3 | 5 2 3 0 | 2 0 5 2 0 0 | 5 5 0 0 | 2 0 5 2 0 2 3

D G D A D A D

5 2 3 0 | 2 0 5 2 0 0 2 | 5 4 5 0 2 5 0 5 | 4 0 2 4 0

Arrangement ©1995 by Pete Martin
All Rights Reserved

www.petimarpres.com

The Ash Grove

Traditional

Fiddle

Chords: G, Em, Am, D, Em, C, G, D, G

Musical notation for fiddle in G major, 3/4 time. The staff shows a sequence of notes with bowing directions (V for up-bow, ▭ for down-bow). The notes are: G4 (V), A4 (▭), B4 (V), A4 (▭), G4 (V), F#4 (▭), E4 (V), D4 (▭), C4 (V), B3 (▭), A3 (V), G3 (▭), F#3 (V), E3 (▭), D3 (V), C3 (▭), B2 (V), A2 (▭), G2 (V), F#2 (▭), E2 (V), D2 (▭), C2 (V), B1 (▭), A1 (V), G1 (▭).

Mandolin Tablature

Chords: G, Em, Am, D, Em

Musical notation for mandolin in G major, 3/4 time. The staff shows a sequence of notes with bowing directions (V for up-bow, ▭ for down-bow). The notes are: G4 (V), A4 (▭), B4 (V), A4 (▭), G4 (V), F#4 (▭), E4 (V), D4 (▭), C4 (V), B3 (▭), A3 (V), G3 (▭), F#3 (V), E3 (▭), D3 (V), C3 (▭), B2 (V), A2 (▭), G2 (V), F#2 (▭), E2 (V), D2 (▭), C2 (V), B1 (▭), A1 (V), G1 (▭).

Chords: G, D, A, D, G, Em, Am

Musical notation for mandolin in G major, 3/4 time. The staff shows a sequence of notes with bowing directions (V for up-bow, ▭ for down-bow). The notes are: G4 (V), A4 (▭), B4 (V), A4 (▭), G4 (V), F#4 (▭), E4 (V), D4 (▭), C4 (V), B3 (▭), A3 (V), G3 (▭), F#3 (V), E3 (▭), D3 (V), C3 (▭), B2 (V), A2 (▭), G2 (V), F#2 (▭), E2 (V), D2 (▭), C2 (V), B1 (▭), A1 (V), G1 (▭).

Chords: D, Em, C, G, D, G

Musical notation for mandolin in G major, 3/4 time. The staff shows a sequence of notes with bowing directions (V for up-bow, ▭ for down-bow). The notes are: G4 (V), A4 (▭), B4 (V), A4 (▭), G4 (V), F#4 (▭), E4 (V), D4 (▭), C4 (V), B3 (▭), A3 (V), G3 (▭), F#3 (V), E3 (▭), D3 (V), C3 (▭), B2 (V), A2 (▭), G2 (V), F#2 (▭), E2 (V), D2 (▭), C2 (V), B1 (▭), A1 (V), G1 (▭).

Arrangement ©1995 by Pete Martin
All Rights Reserved

www.petimarpress.com

Bill Cheatum

Traditional

Fiddle

Mandolin Tablature

Mandolin Tablature

Mandolin Tablature

Mandolin Tablature

Arrangement ©1995 by Pete Martin
All Rights Reserved

www.petimarpress.com

Billy in the Lowground

Traditional

Fiddle

Mandolin Tablature

Mandolin Tablature

Mandolin Tablature

Mandolin Tablature

Arrangement ©1995 by Pete Martin
All Rights Reserved

Blackberry Blossom

Traditional

Fiddle

Mandolin Tablature

Mandolin Tablature

Mandolin Tablature

Mandolin Tablature

Arrangement ©1995 by Pete Martin
All Rights Reserved

www.petimarpress.com

Boil Them Cabbage Down

Traditional

Fiddle

Mandolin Tablature

This system contains the first two staves of music. The top staff is a Fiddle part in treble clef with a key signature of two sharps (F# and C#) and a common time signature. It features a series of eighth-note patterns across four measures. Above the staff are chord diagrams for A, D, A, and E. The bottom staff is a Mandolin Tablature with four lines representing strings E, A, D, and G. It contains numerical fret numbers (4, 5, 4, 2) corresponding to the notes in the fiddle part.

This system contains the next two staves of music. The top staff continues the fiddle part with eighth-note patterns. Above the staff are chord diagrams for A, D, A, E, and A. The bottom staff continues the mandolin tablature with fret numbers 4, 5, 4, 2, 2, 0, 0, 0, 0, 0.

This system contains the third two staves of music. The top staff features a mix of quarter and eighth notes. Above the staff are chord diagrams for A, D, and A. The bottom staff continues the mandolin tablature with fret numbers 2, 0, 4, 0, 2, 0, 2, 4, 5, 2.

This system contains the final two staves of music. The top staff concludes the fiddle part with eighth-note patterns. Above the staff are chord diagrams for A, D, A, E, and A. The bottom staff concludes the mandolin tablature with fret numbers 2, 0, 4, 0, 4, 4, 4, 2, 2, 2, 0, 0, 0, 0, 0.

Arrangement ©1995 by Pete Martin
All Rights Reserved

www.petimarpres.com

Cherokee Shuffle

Traditional

Fiddle

Fiddle staff with notes and chords A and F#m. The staff shows a sequence of eighth and sixteenth notes with various bowing techniques indicated by 'v' and 'V' marks.

Mandolin Tablature

Mandolin tablature for the first system with chords D, A, E, and A. The tablature shows fret numbers on a six-line staff.

Mandolin tablature for the second system with chords D, A, and D. The tablature shows fret numbers on a six-line staff.

Mandolin tablature for the third system with chords A, D, and A. The tablature shows fret numbers on a six-line staff.

Mandolin tablature for the fourth system with chords F#m, E, and A. The tablature shows fret numbers on a six-line staff.

Arrangement ©1995 by Pete Martin
All Rights Reserved

www.petimarpress.com

Cold Frosty Morning

Traditional

Fiddle

Am G

Mandolin Tablature

Am G Am

A G E

Am C Dm E Am G Am

Arrangement ©1995 by Pete Martin
All Rights Reserved

www.petimarpres.com

Cripple Creek

Traditional

Fiddle

A D A

Mandolin Tablature

E A

A

E A

Arrangement ©1995 by Pete Martin
All Rights Reserved

www.petimarpres.com

Devil's Dream

Traditional

Fiddle

Mandolin Tablature

Arrangement ©1995 by Pete Martin
All Rights Reserved

www.petimarpres.com

Eighth of January

Traditional

Fiddle

Mandolin Tablature

Mandolin Tablature

Mandolin Tablature

Mandolin Tablature

Arrangement ©1995 by Pete Martin
All Rights Reserved

www.petimarpress.com